

Reflexos Nociceptivos Motores e Neurovegetativos



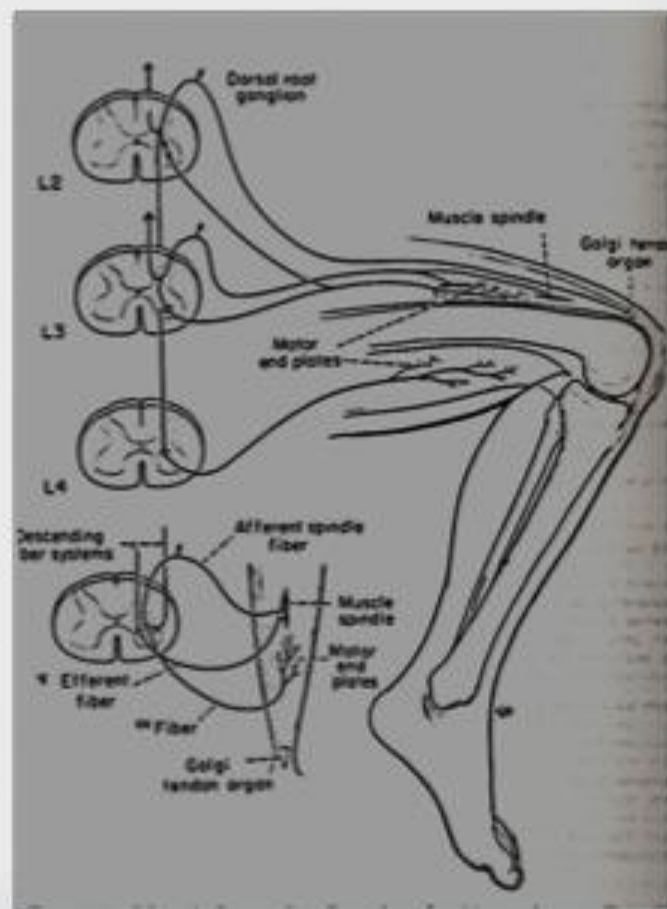
Dr. Paulo Roberto Santos Mendonça
Neurocirurgião Funcional
Aracaju-SE

Reflexos Nociceptivos Motores e Neurovegetativos



Atividade Reflexa:

Tipo de atividade primitiva, independente do controle voluntário e se produz em resposta a estímulos específicos, tendo como base anatômica o arco reflexo.

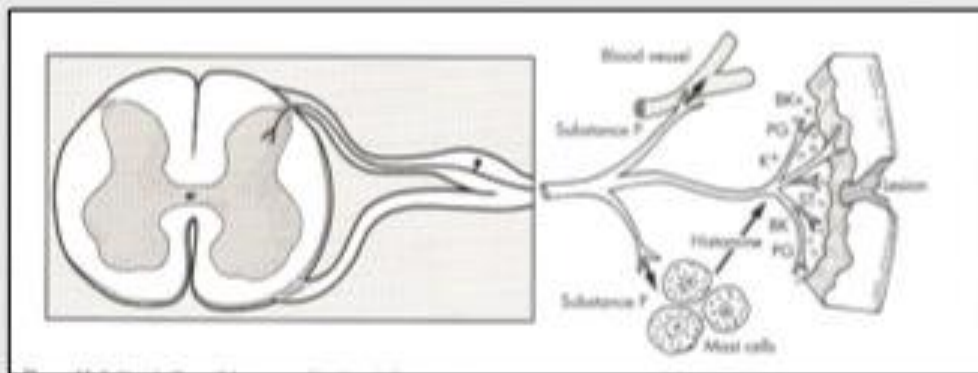


Reflexos Nociceptivos Motores e Neurovegetativos



Componentes básicos do arco reflexo:

- ❖ Receptor
- ❖ Fibra Aferente



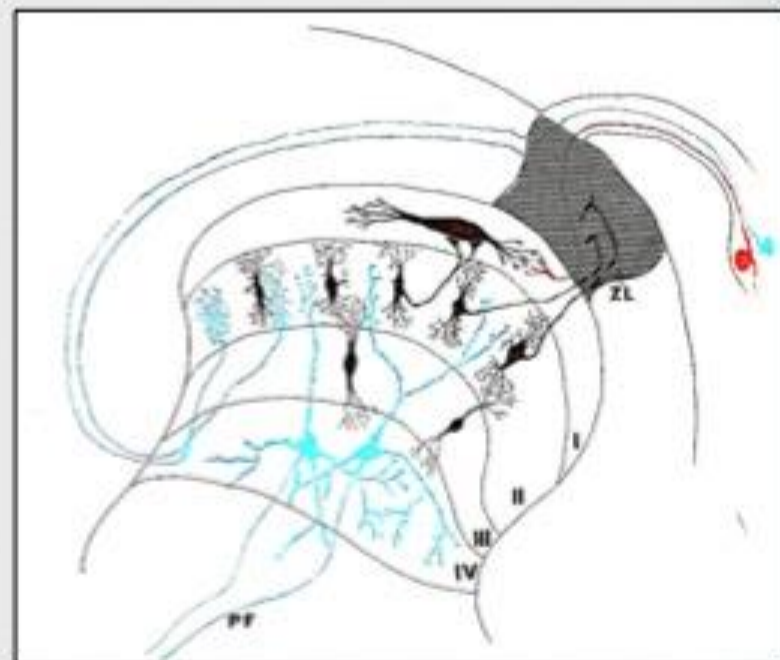
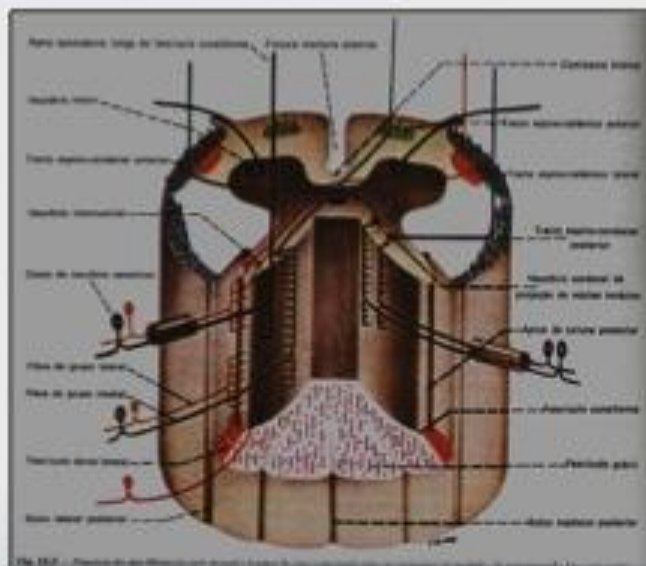
Reflexos Nociceptivos Motores e Neurovegetativos



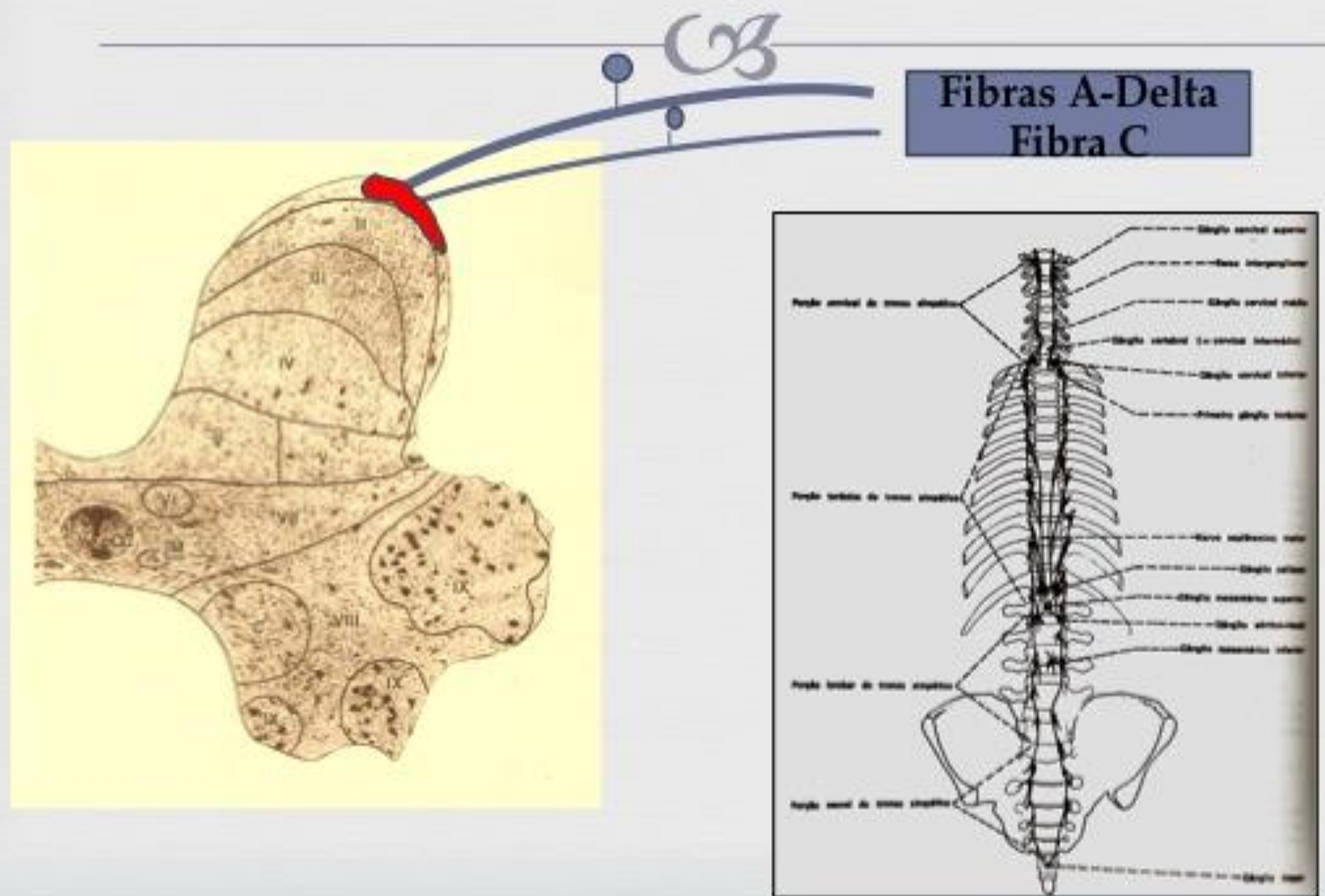
Componentes básicos do arco reflexo:

❖ Receptor

❖ Fibra Aferente



Reflexos Nociceptivos Motores e Neurovegetativos

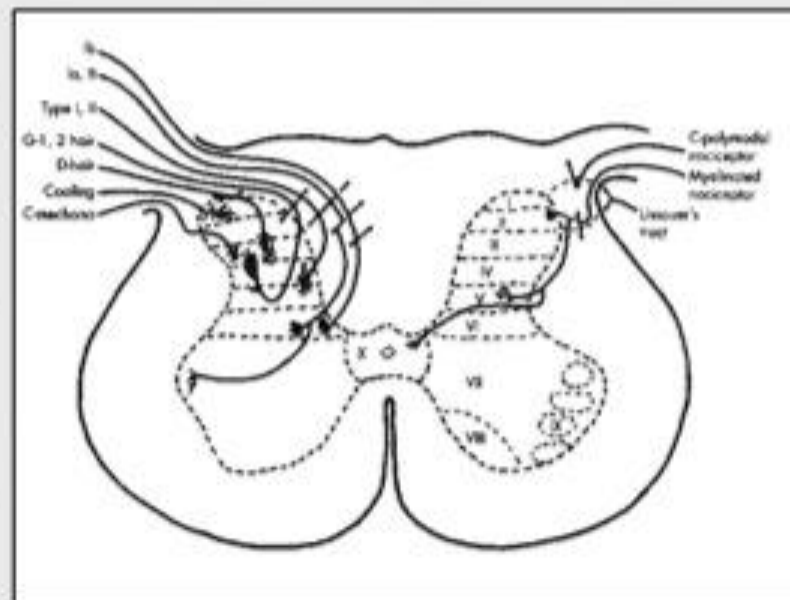


Reflexos Nociceptivos Motores e Neurovegetativos



Componentes básicos do arco reflexo:

- ❖ Receptor
- ❖ Fibra Aferente
- ❖ Sinapses



Reflexos Nociceptivos Motores e Neurovegetativos



Componentes básicos do arco reflexo:

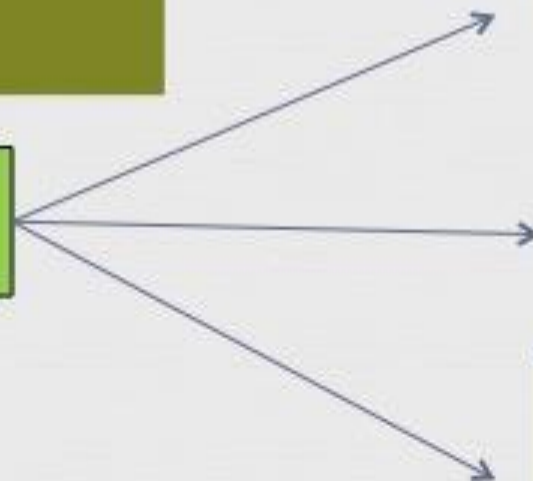
- Receptor
- Fibra Aferente
- Sinapses

Corno Dorsal

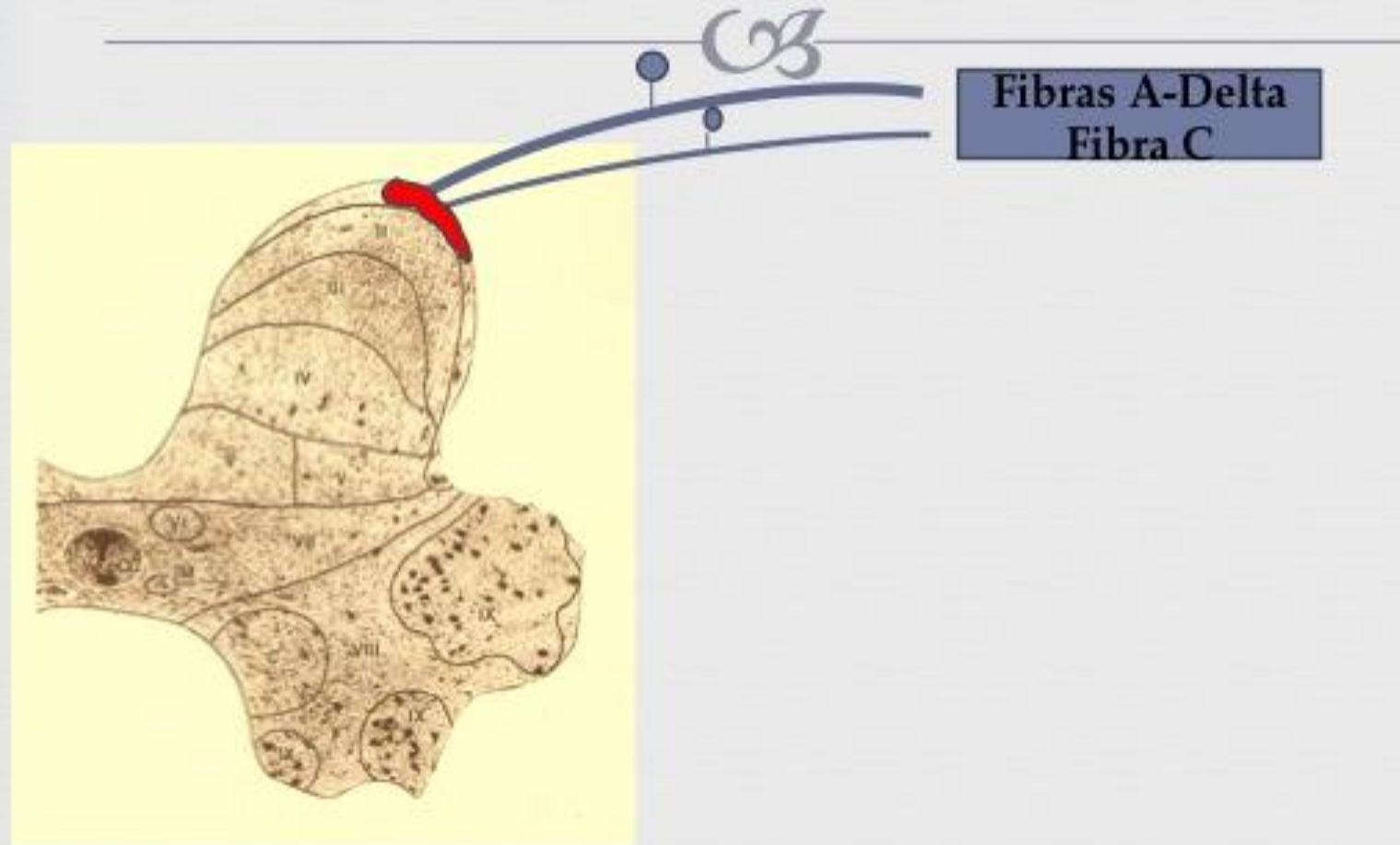
Tractos Ascendentes

Corno Anterior

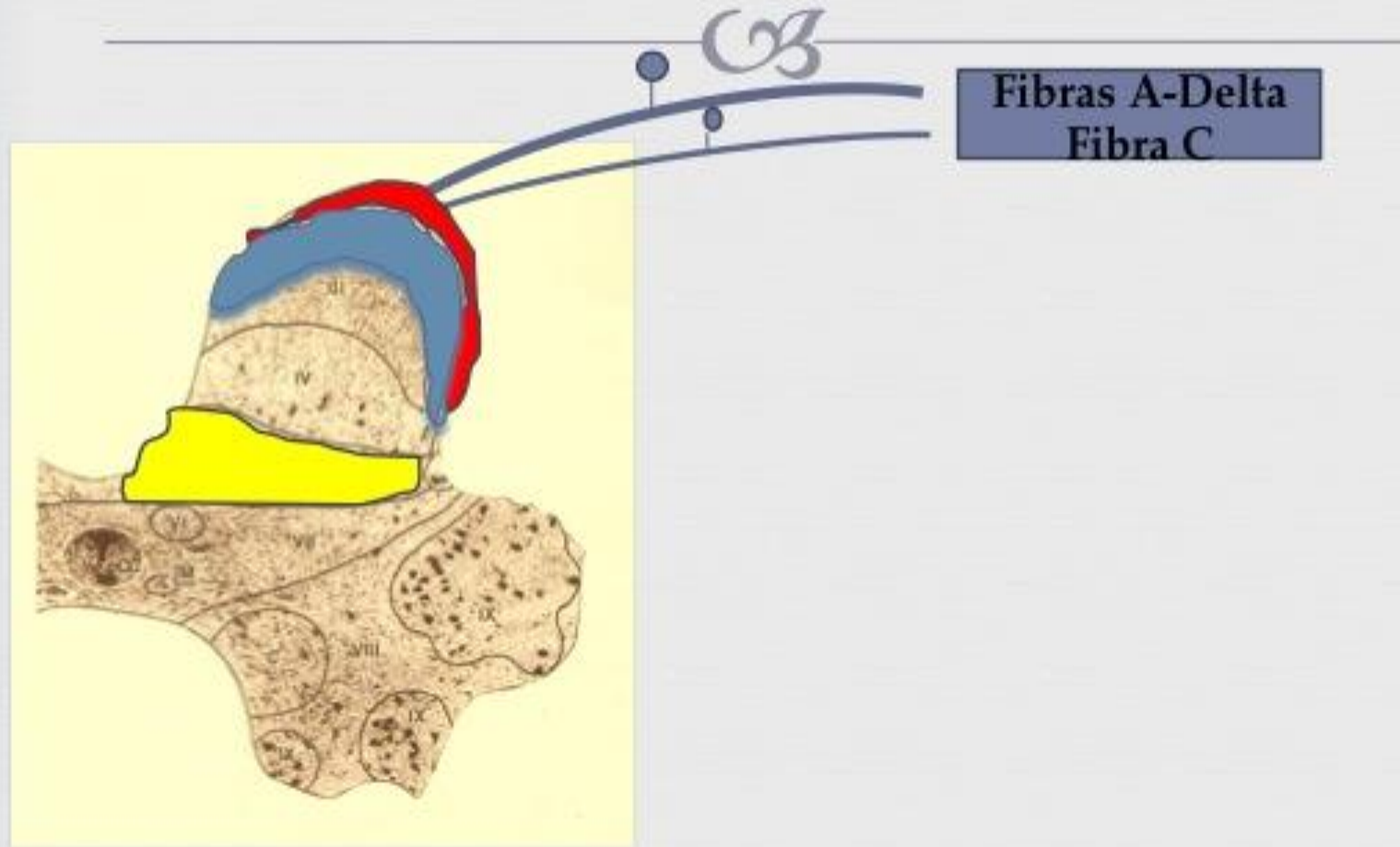
Coluna Intermediolateral



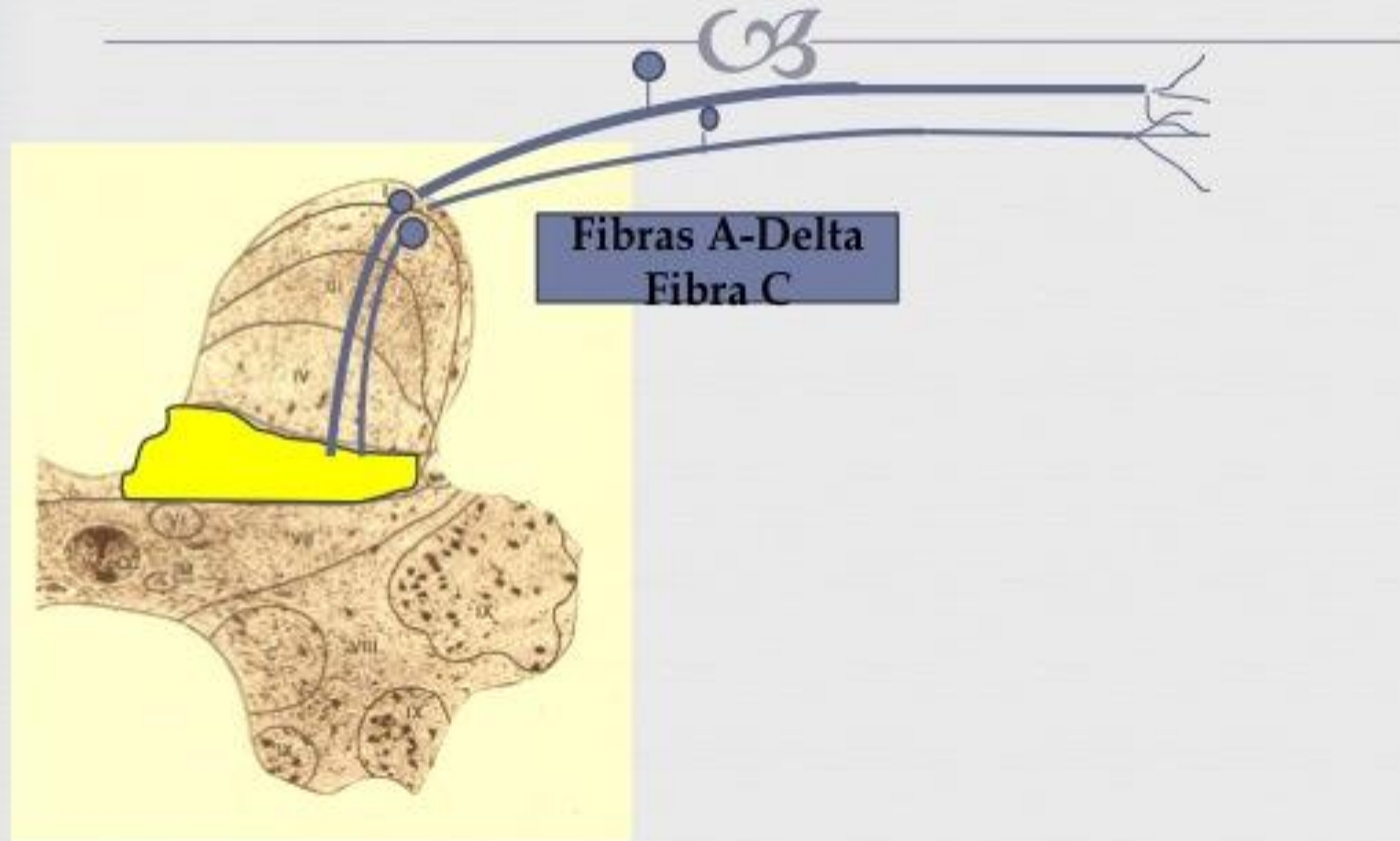
Reflexos Nociceptivos Motores e Neurovegetativos



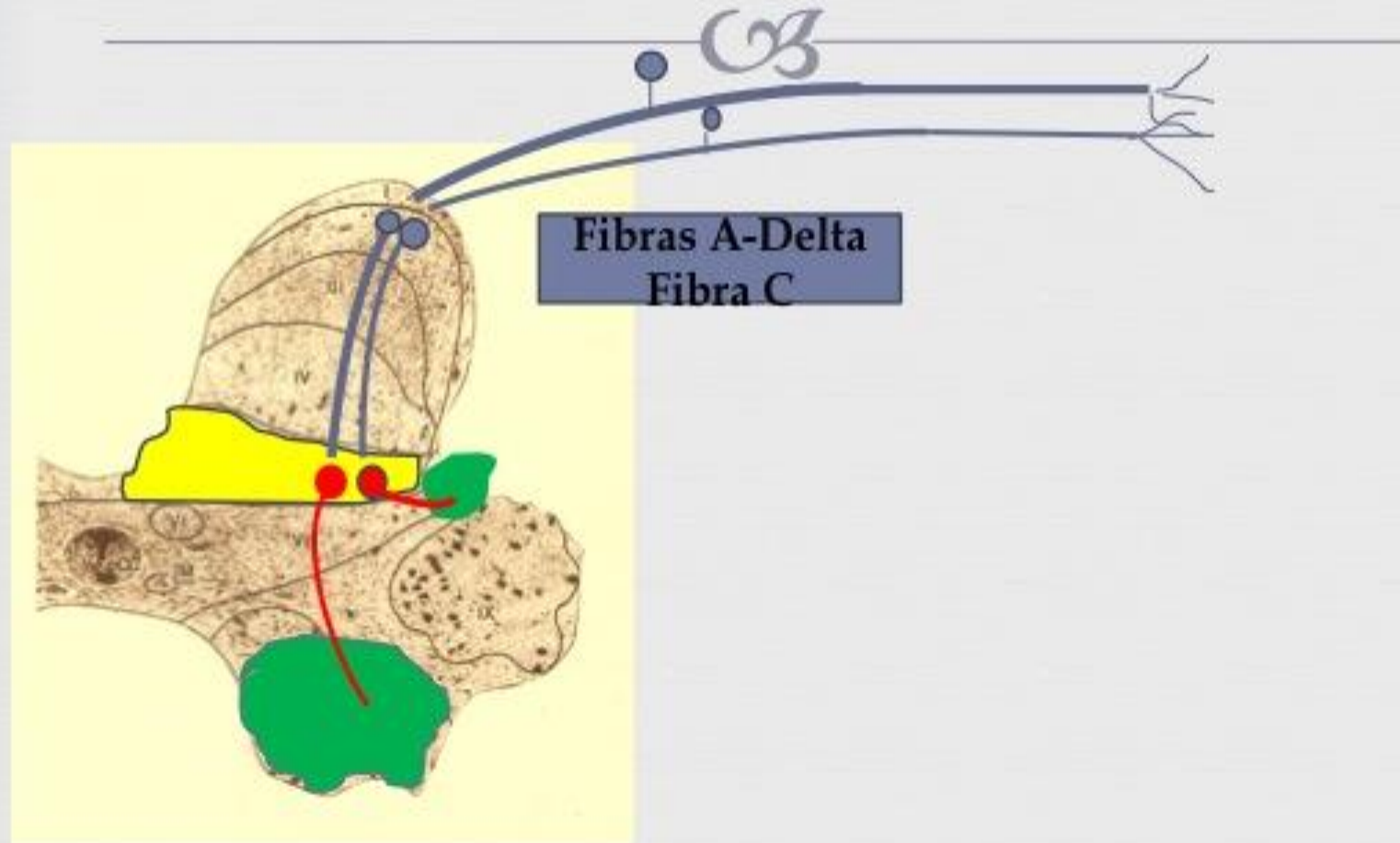
Reflexos Nociceptivos Motores e Neurovegetativos



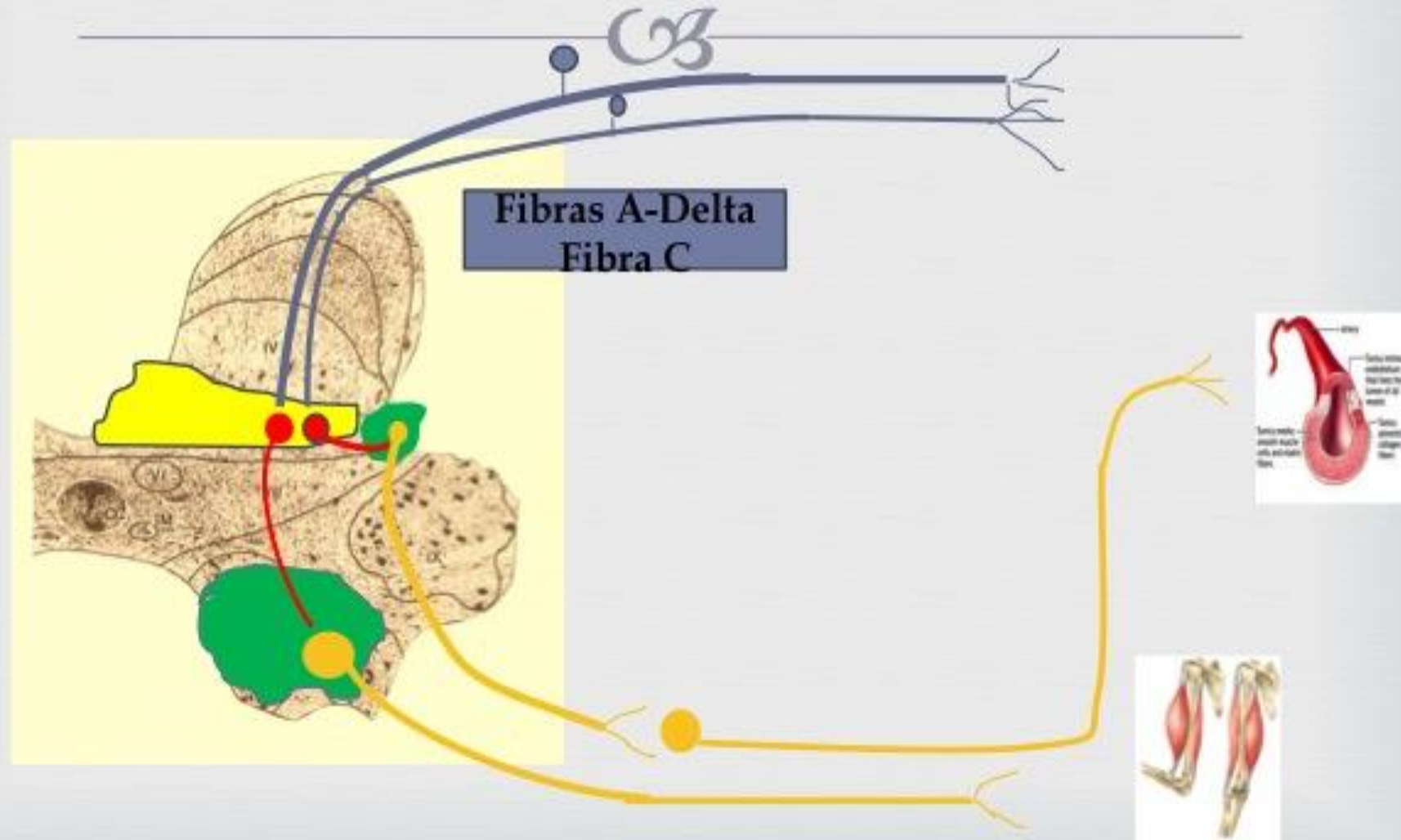
Reflexos Nociceptivos Motores e Neurovegetativos



Reflexos Nociceptivos Motores e Neurovegetativos



Reflexos Nociceptivos Motores e Neurovegetativos

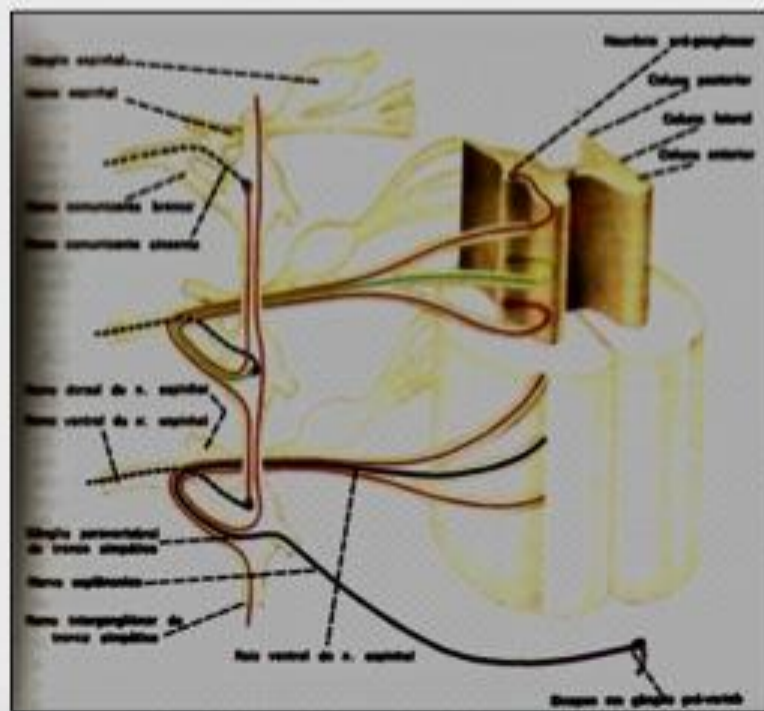
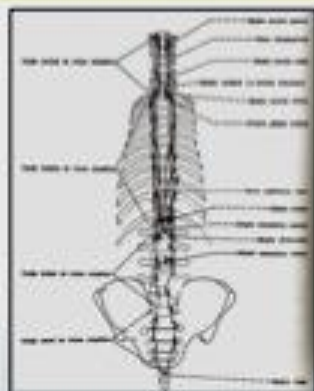


Reflexos Nociceptivos Motores e Neurovegetativos

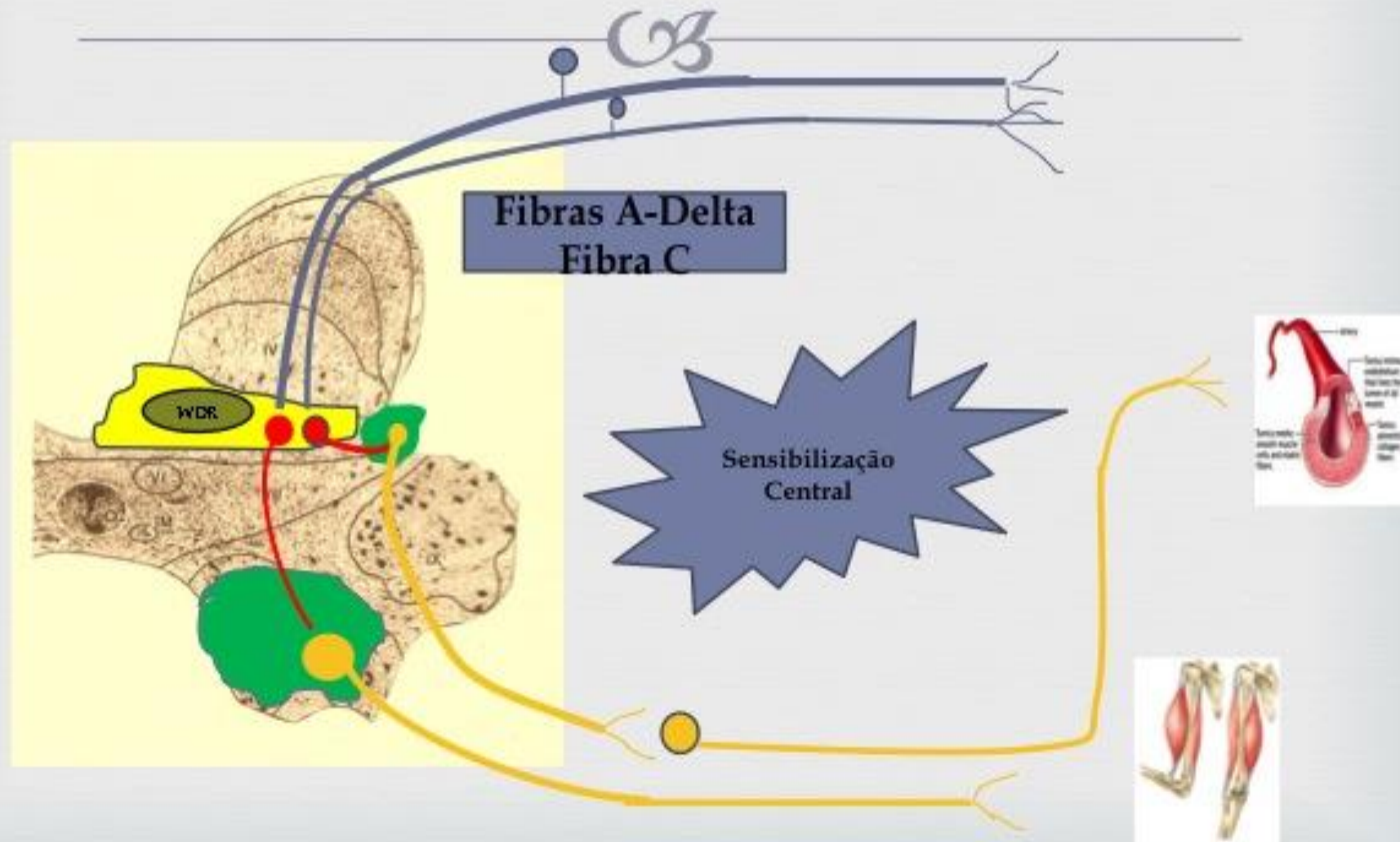


Componentes básicos do arco reflexo:

- Receptor
- Fibra Aferente
- Sinapses
- Fibra Eferente



Reflexos Nociceptivos Motores e Neurovegetativos

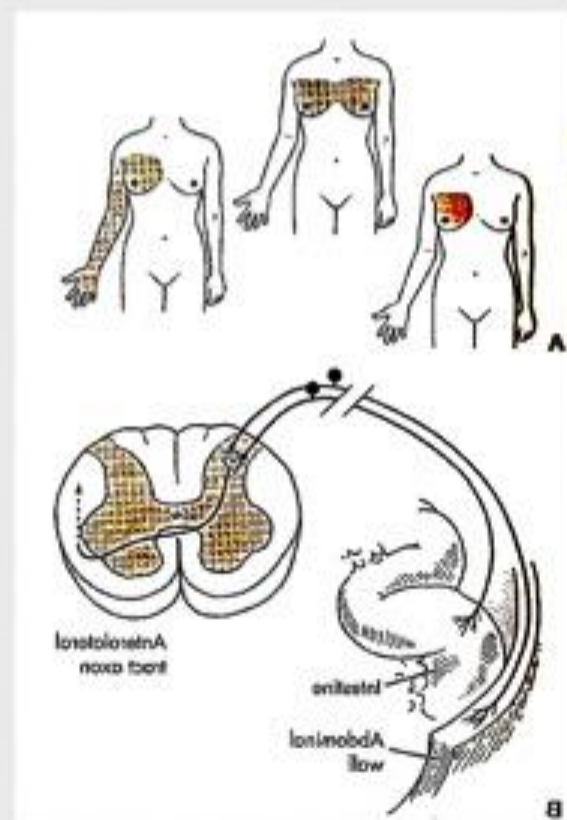


Reflexos Nociceptivos Motores e Neurovegetativos



Dor Referida: Conceito

Sensação de dor em uma área somática adjacente ou à distância do sítio de origem, geralmente compreendida no mesmo metâmero.

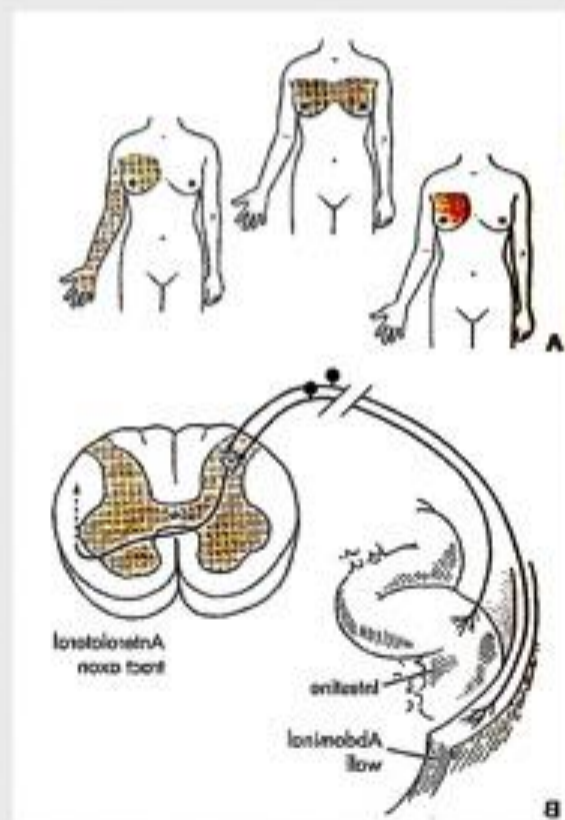


Reflexos Nociceptivos Motores e Neurovegetativos



**Dor Referida:
Conceito**

**Estruturas Somáticas
Profundas
X
Estruturas Viscerais**



Reflexos Nociceptivos Motores e Neurovegetativos

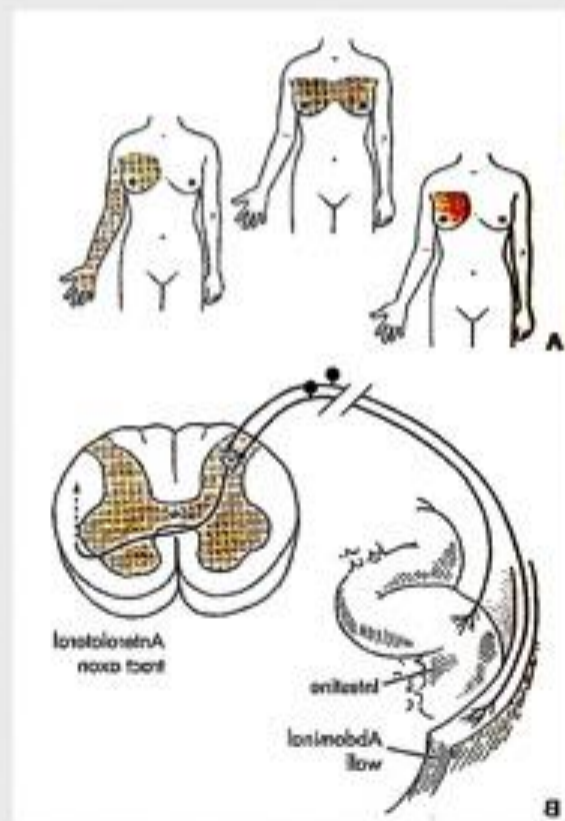


**Dor Referida:
Conceito**

**Localizada no Metâmero
Relacionado**



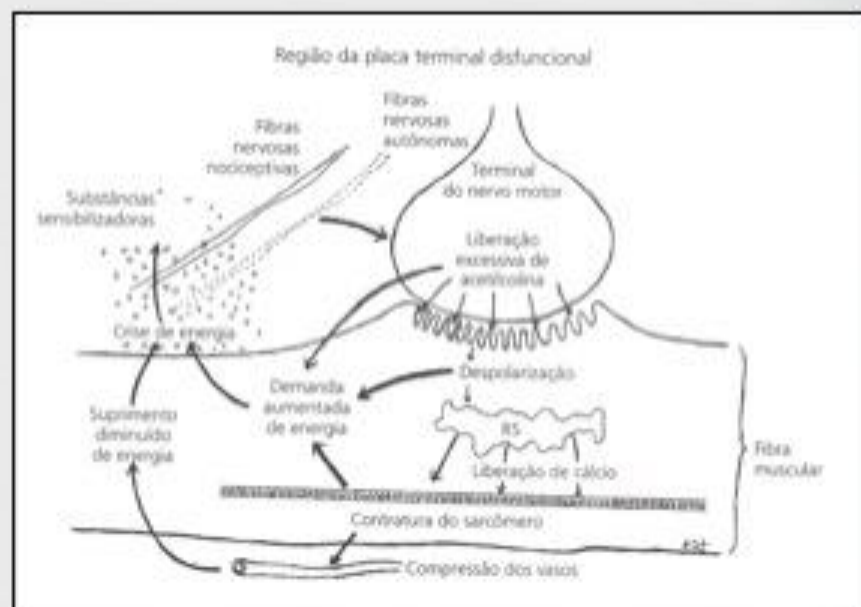
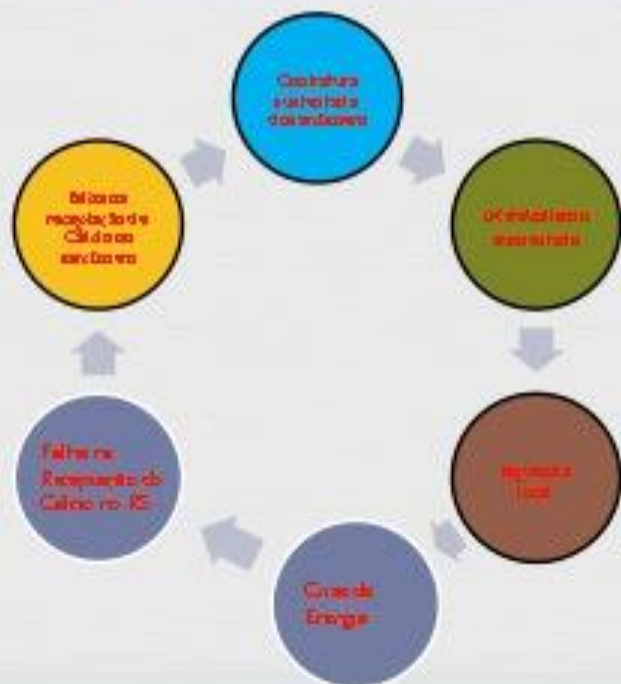
**Tensão Muscular
Hiperálgia
Alodinia**



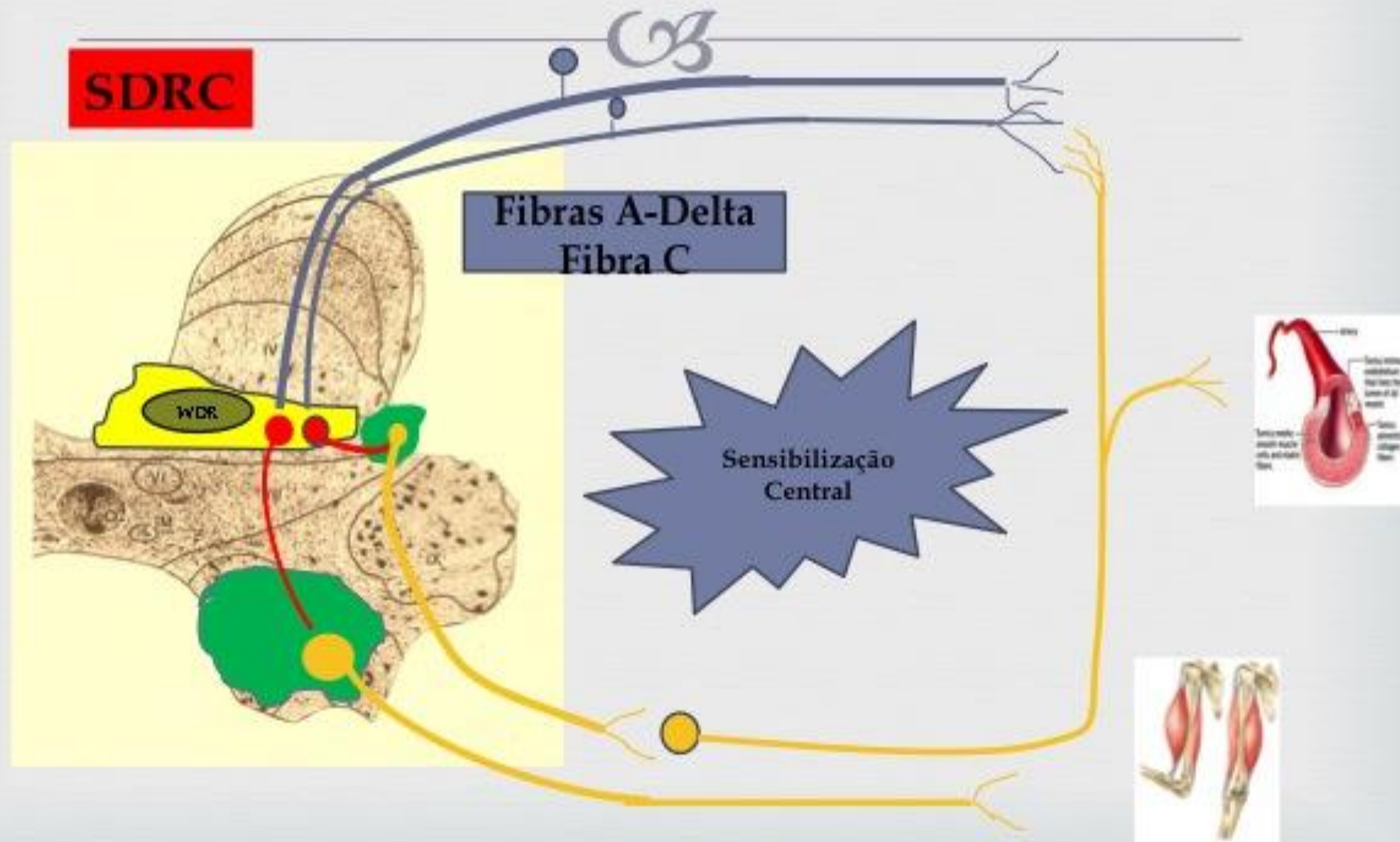
Reflexos Nociceptivos Motores e Neurovegetativos



Dor Miofascial:



Reflexos Nociceptivos Motores e Neurovegetativos



Reflexos Nociceptivos Motores e Neurovegetativos



SDRC

