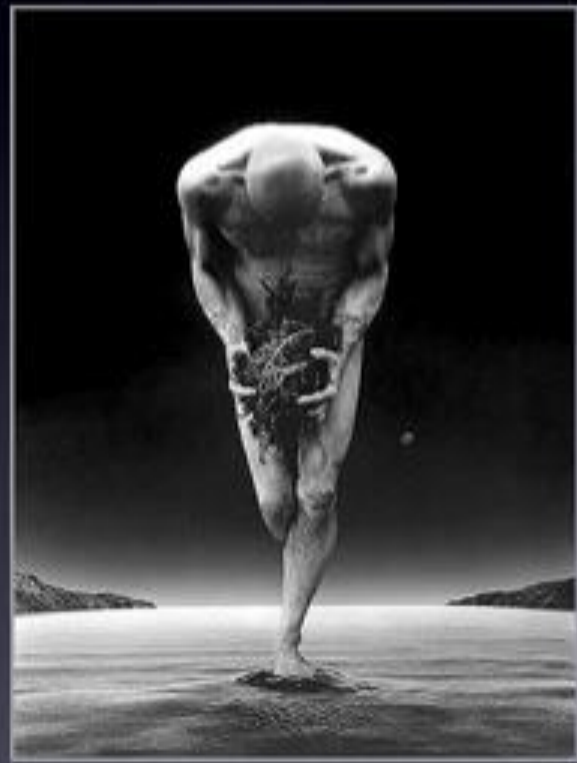


Dor axial, dor apendicular, dor referida, dor radicular



Dr. Benedito Domingos Amorim Filho



Dor axial nociceptiva

- dor de distribuição axial na coluna



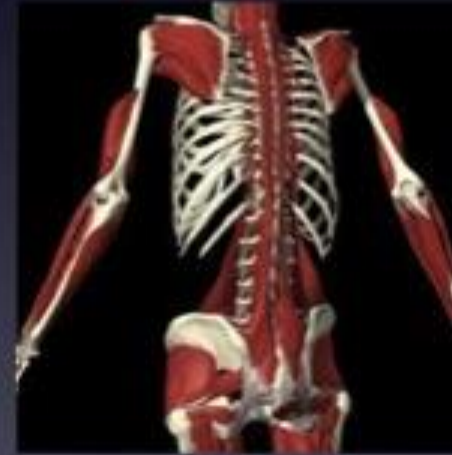
Dor axial nociceptiva

Causas:

- posturais
- trauma
- stress ocupacional
- práticas esportivas
- obesidade
- déficits musculares
- inflamações
- tumores
- infecções e/ou anopmalias congêntias

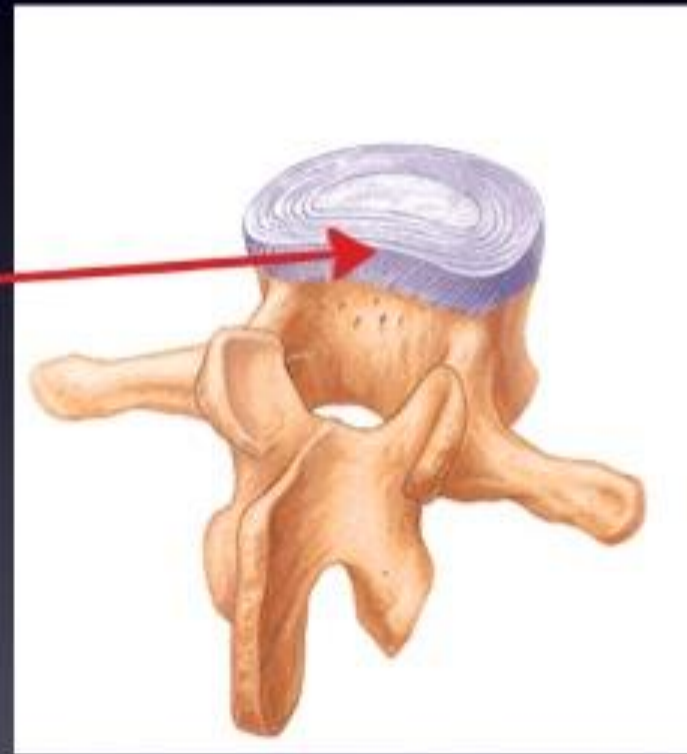
Dor axial nociceptiva

Ocorrem por estímulos nociceptivos a estruturas da coluna



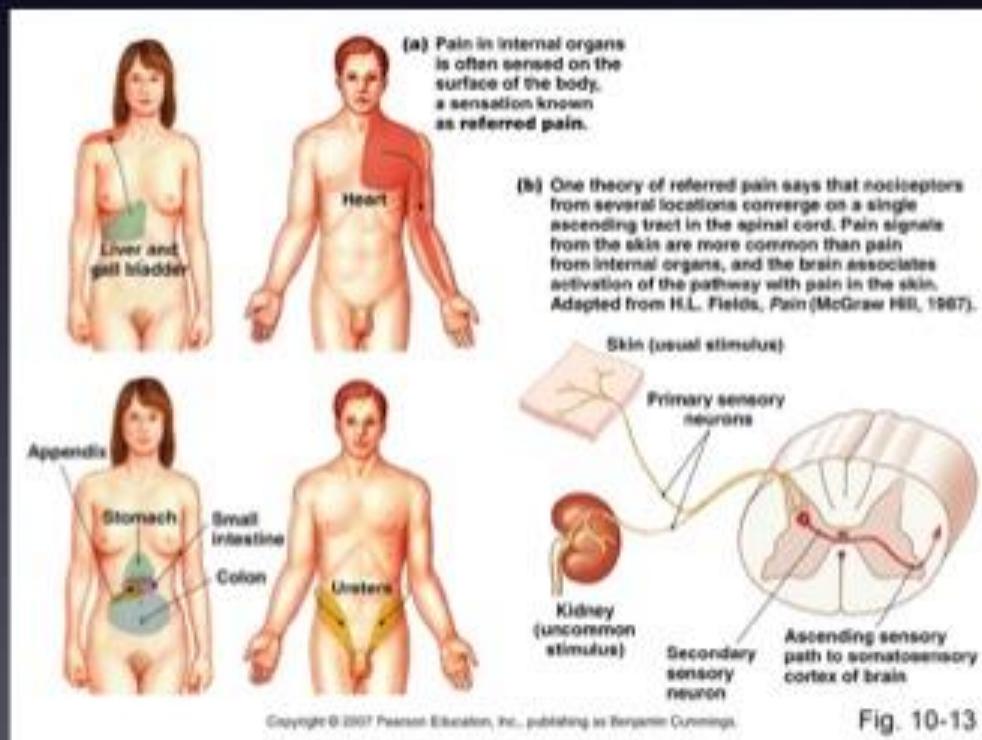
Disco intervertebral

FACE POSTERIOR DO DISCO - Mais potente gerador de potencial nociceptivo da coluna

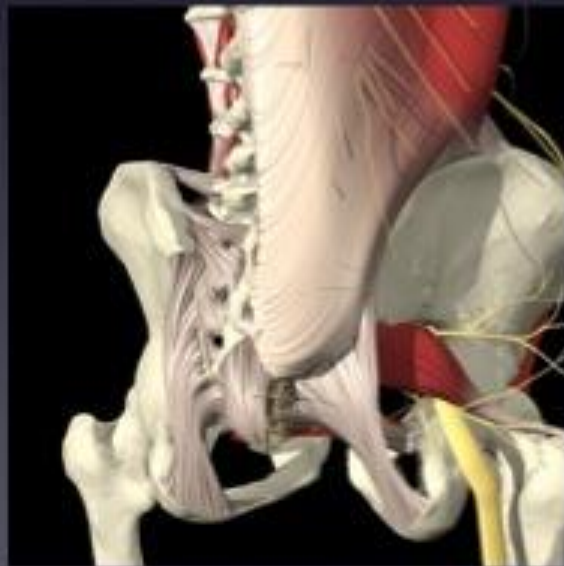
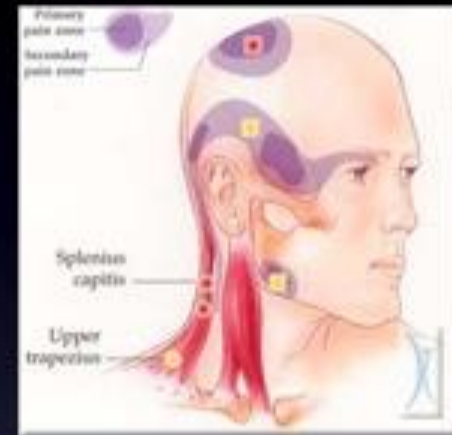
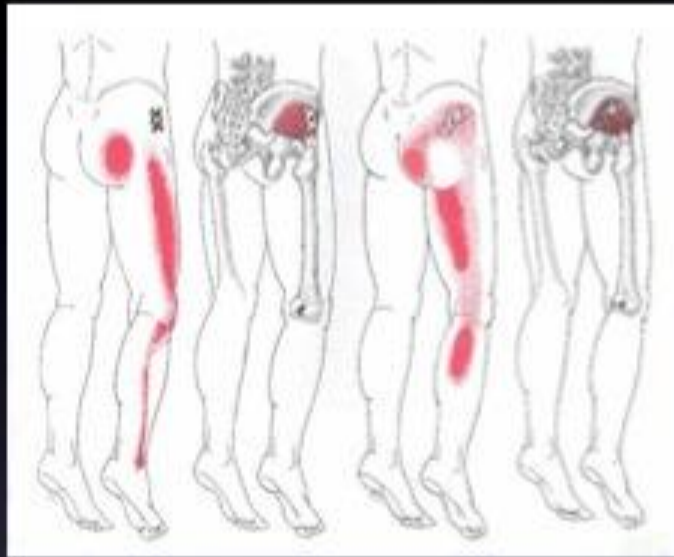


Dor referida

- Dor presenciada em um dermatômo diferente do local onde ocorre o estímulo nociceptivo primário.



Dor referida



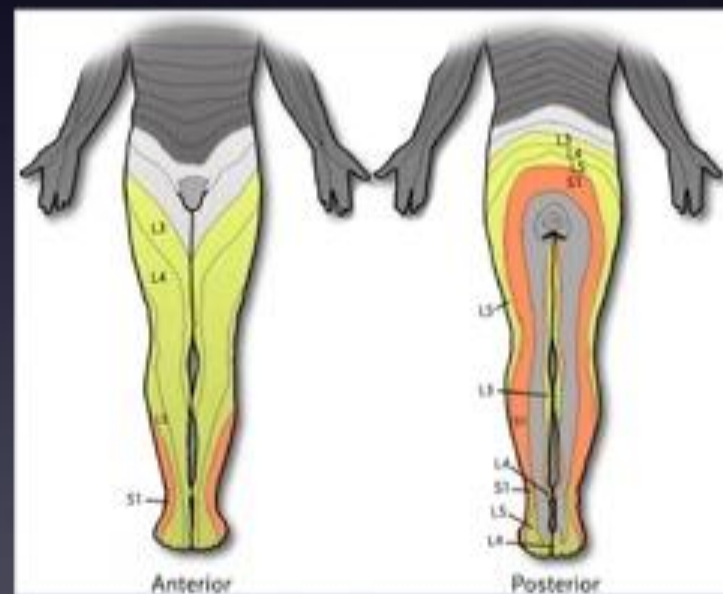
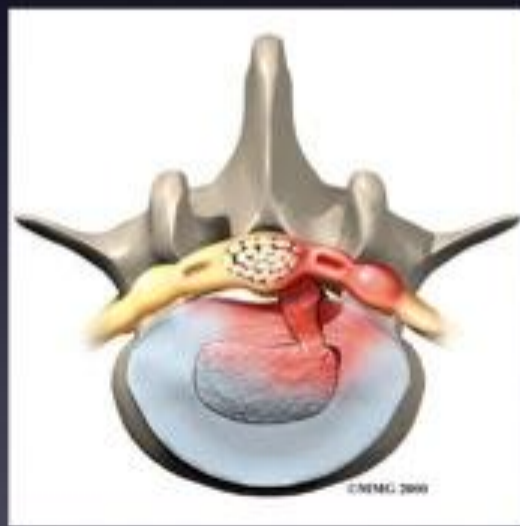
Dor referida

Origem

- disco intervertebral
- articulações zigapofisárias
- articulação sacroilíaca
- musculatura

Dor radicular

- Dor distribuída no dermatômo da raiz acometida.



Dor axial x dor apendicular



Dor axial

Dor apendicular



