

# STABILIZATION OF THE CERVICAL SPINE (C3-7) WITH ARTICULAR MASS (LATERAL MASS) PLATE AND SCREWS

T. GLENN PAIT, M.D.  
LUIS A. B. BORBA, M.D.



## NEUROSURGICAL OPERATIVE ATLAS

Volume 5

AANS PUBLICATIONS COMMITTEE

Editors

SETTI S. RENGACHARY, M.D.

*Professor*

Department of Neurological Surgery  
University of Minnesota  
Minneapolis, Minnesota

ROBERT H. WILKINS, M.D.

*Professor and Chief*

Division of Neurosurgery  
Duke University Medical Center  
Durham, North Carolina

# Técnicas Vigentes

## Roy Camille

10 lateral

90 anterior

## Magerl

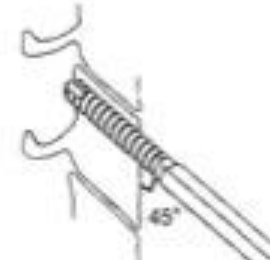
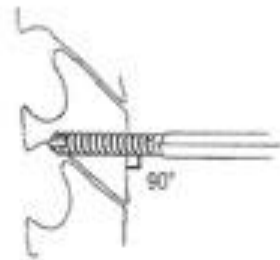
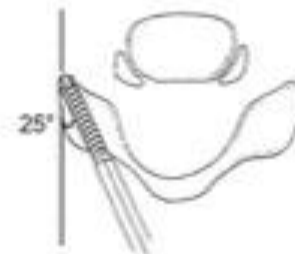
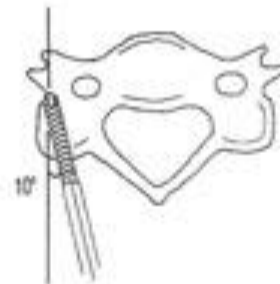
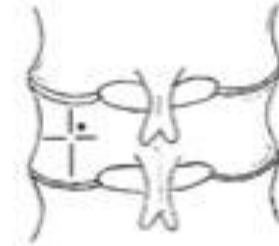
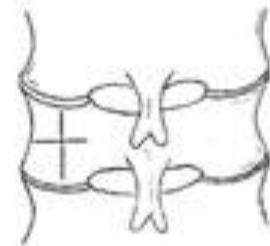
25 lateral

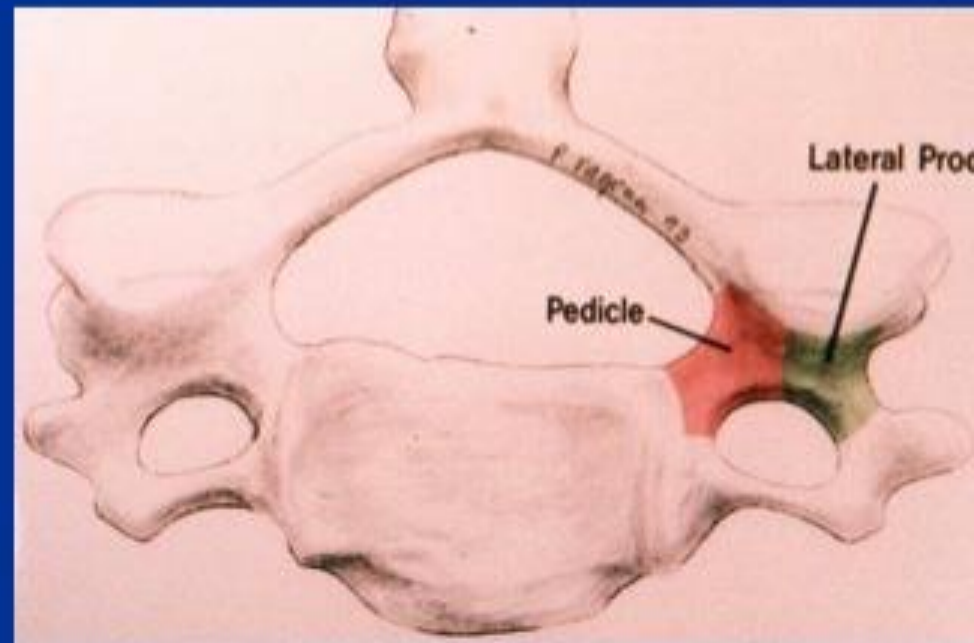
45 anterior

*Journal of Neurosurgery: Spine*

ROY-CAMILLE

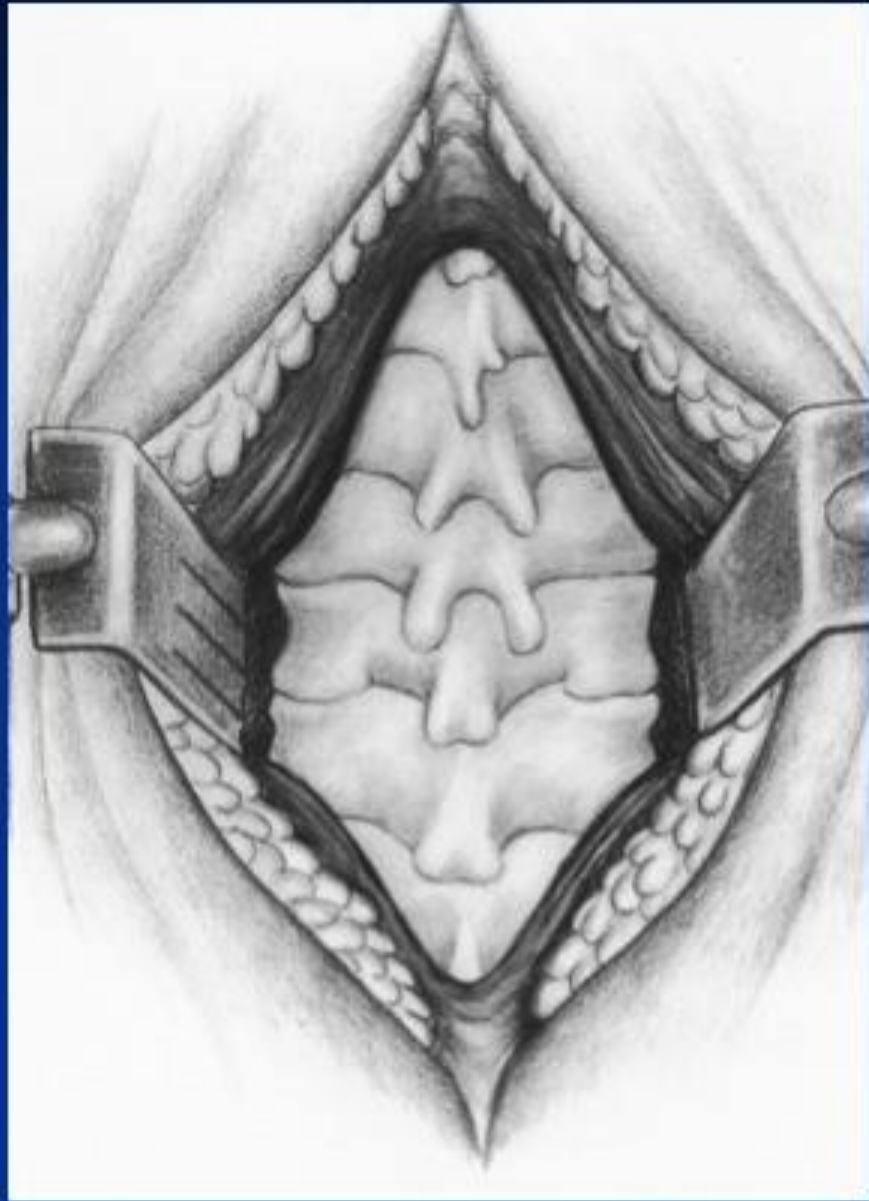
MAGERL



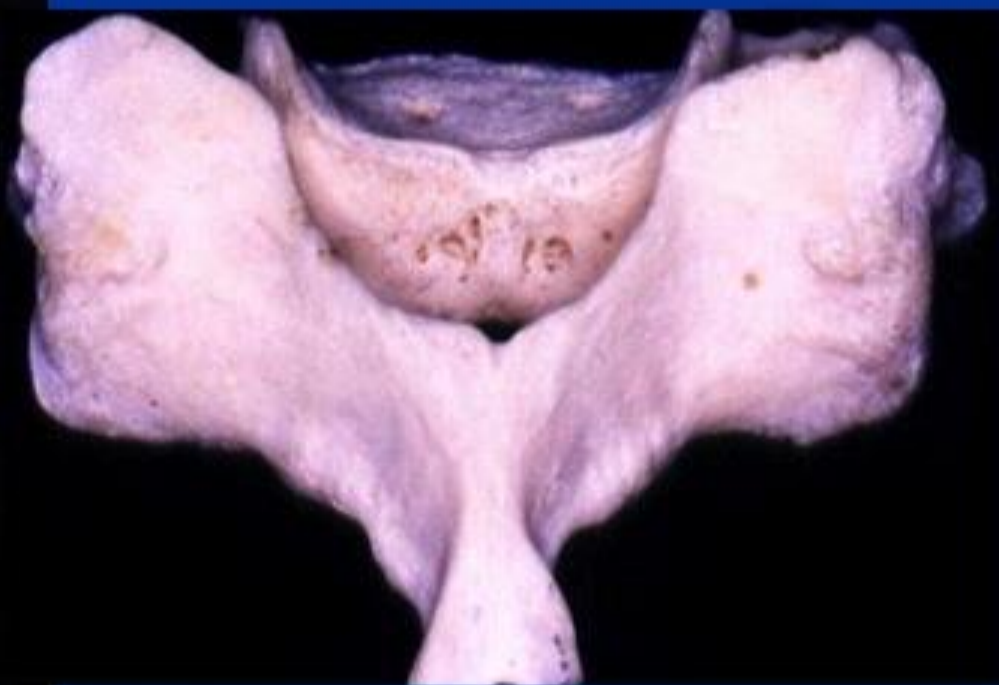
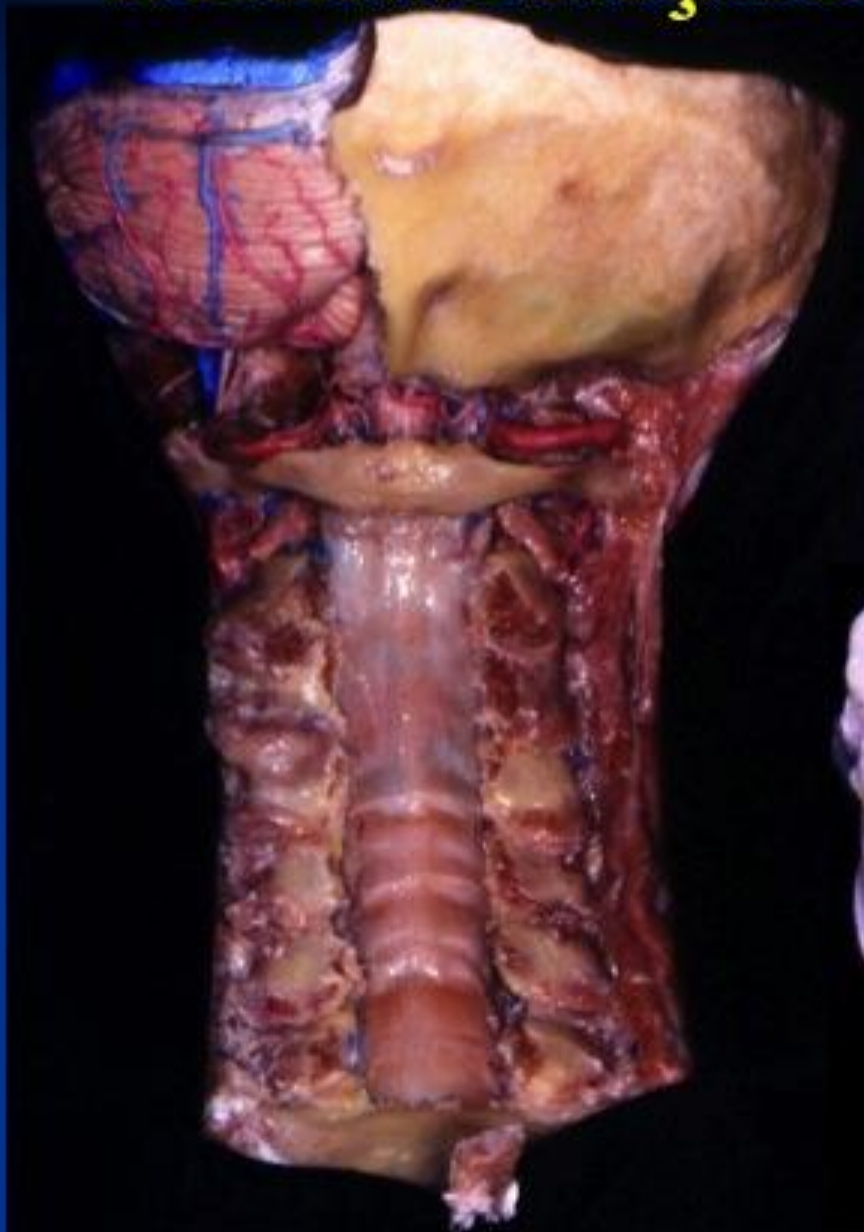




# EXPOSIÇÃO LATERAL AMPLA



# DELIMITAÇÃO FACETÁRIA



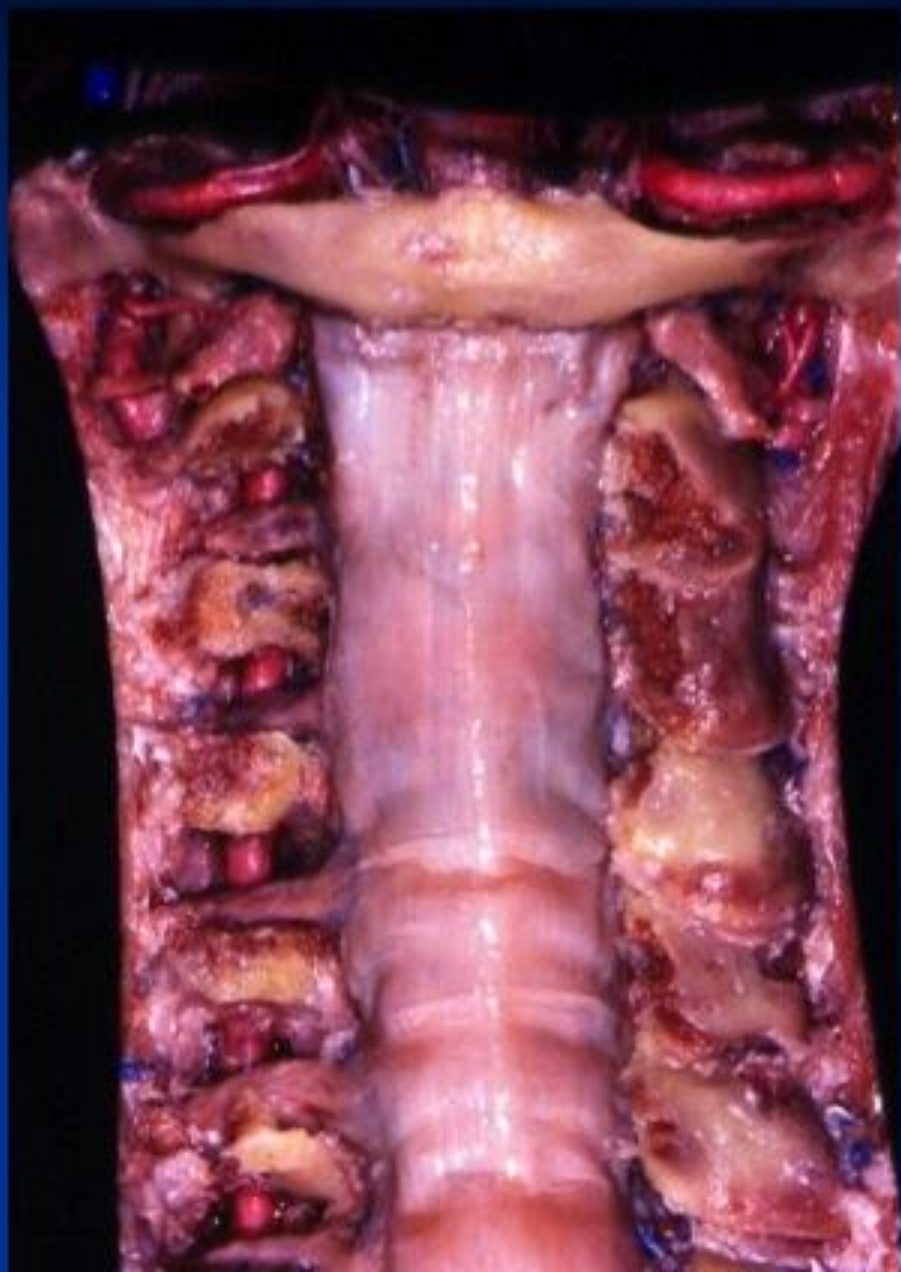


# ANATOMIA ARTICULAR

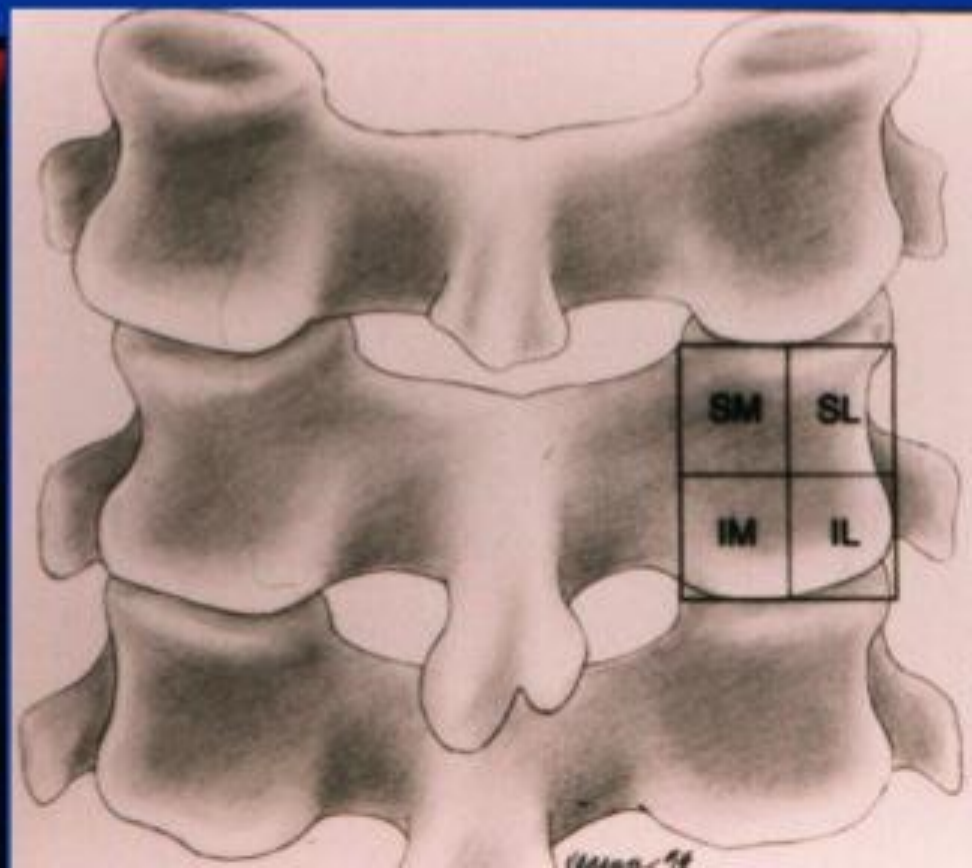
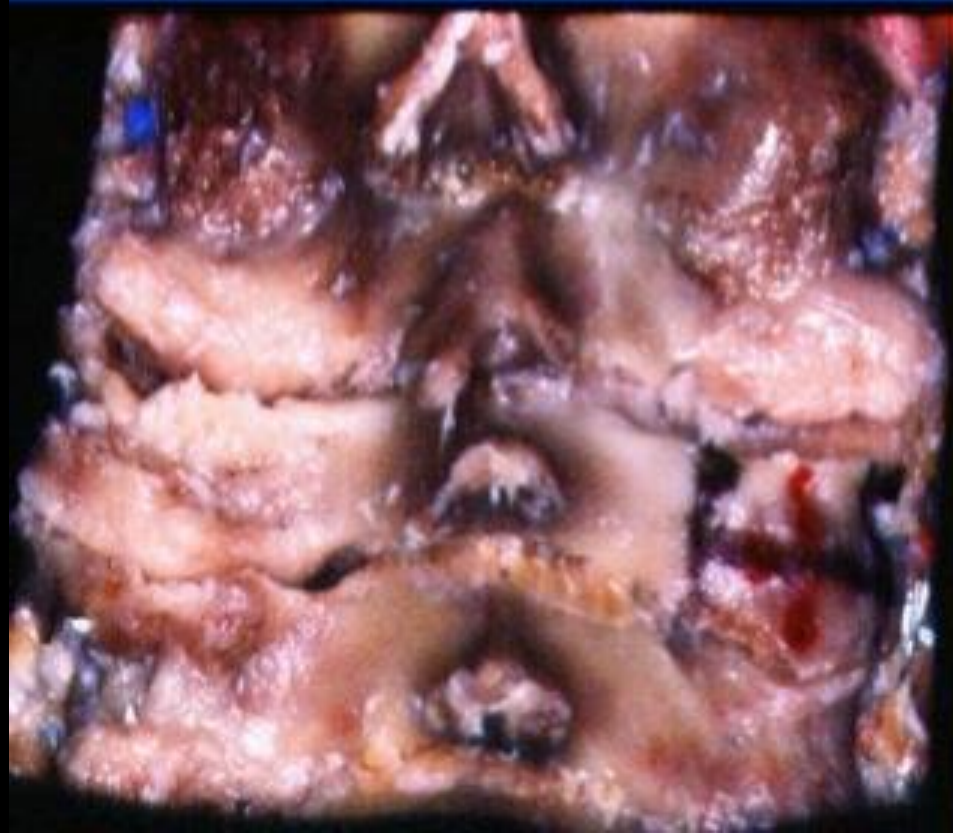




# REMOVENDO A FACETA

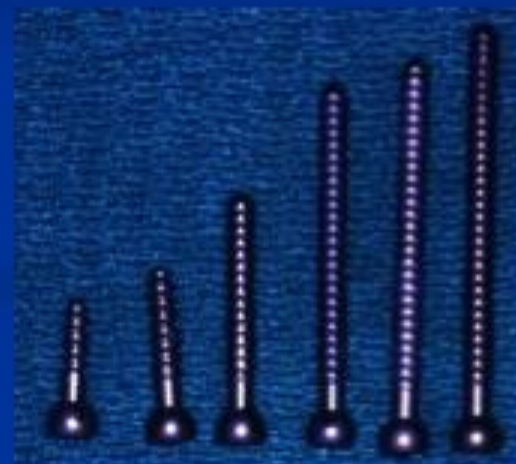


# DELIMITAÇÃO DOS QUADRANTES

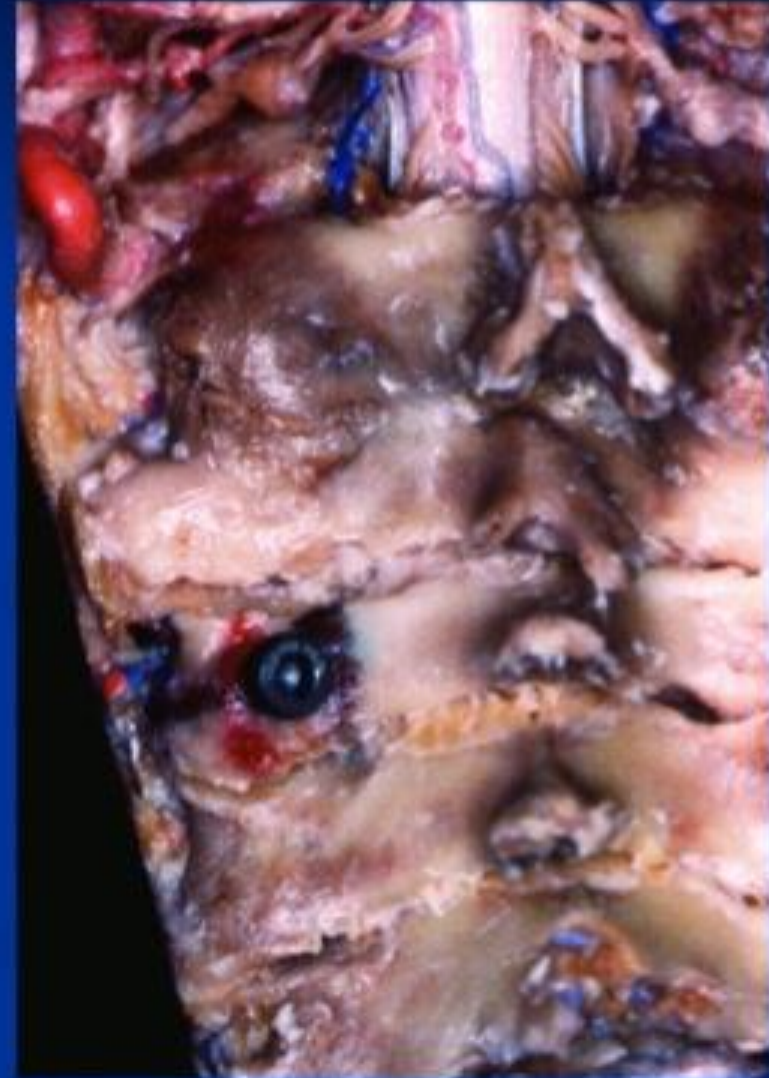




# INSTRUMENTAL



# QUADRANTE SEGURO LATERAL SUPERIOR

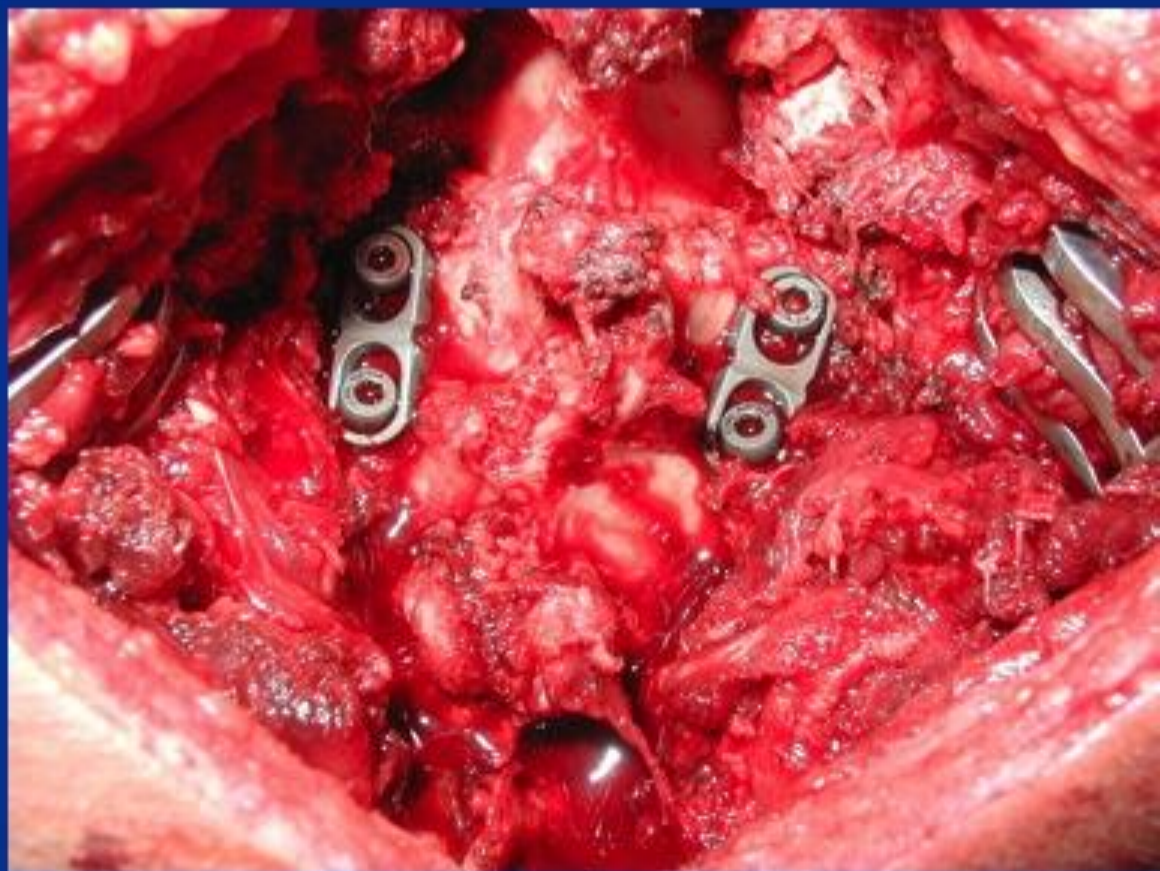




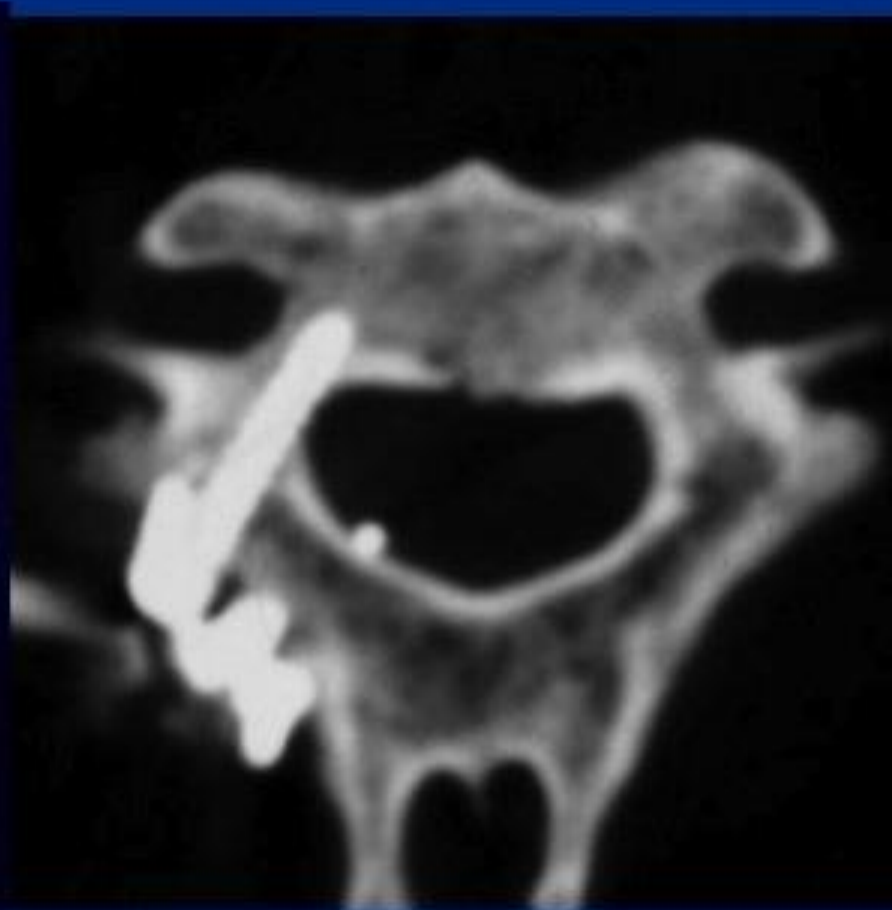








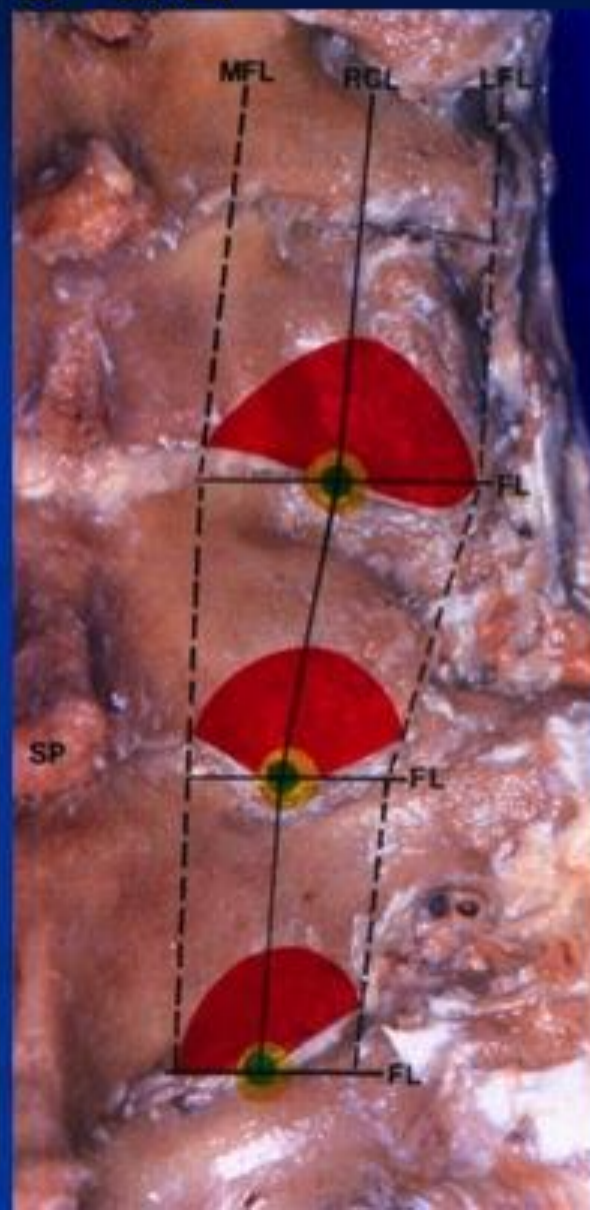
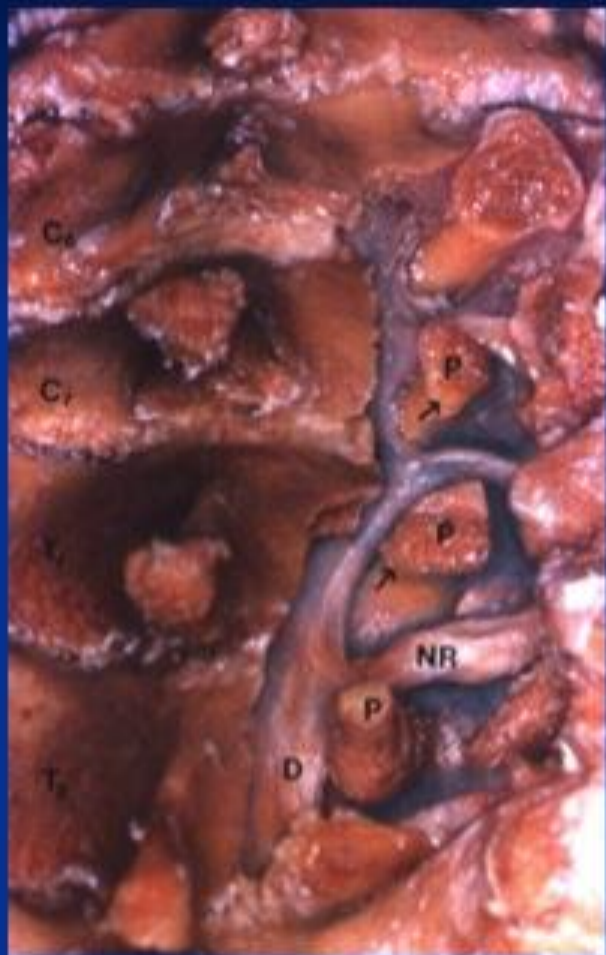
## PARAFUSO PEDICULAR ( pars) C2



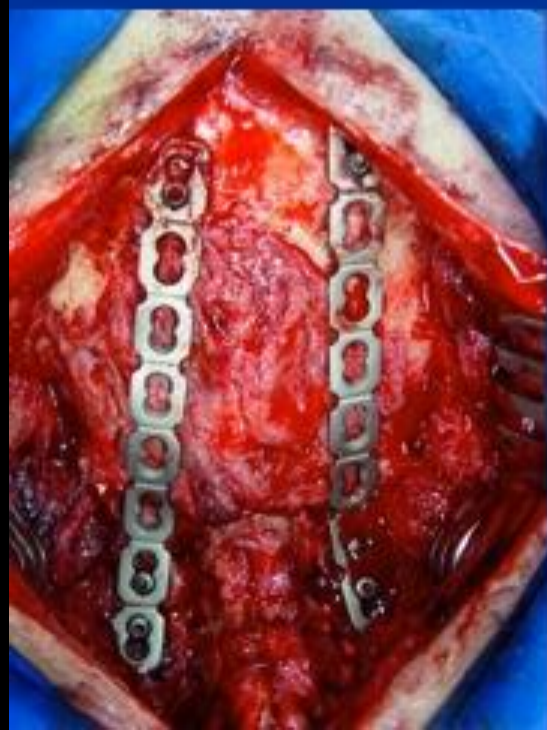
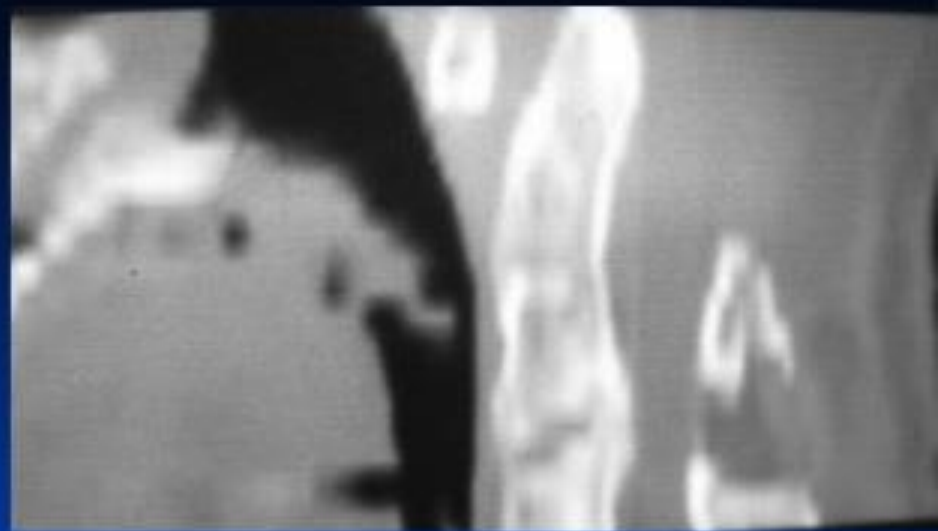
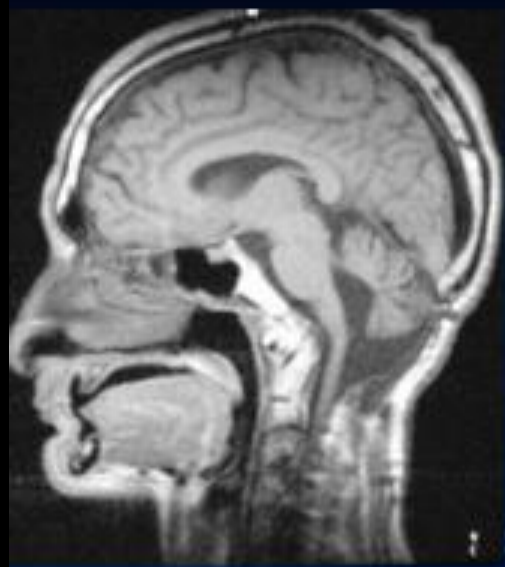




# Parafuso em C7 T1-T2







# ARTRITE REUMATÓIDE

